



USB Serial Converter

User's Manual



Copyright Statement

No part of this publication may be reproduced in any form by any means without the prior written permission. Other trademarks or brand names mentioned herein are trademarks or registered trademarks of their respective companies.

Disclaimer

Information in this document is subject to change without notice. The manufacturer does not make any representations or warranties (implied or otherwise) regarding the accuracy and completeness of this document and shall in no event be liable for any loss of profit or any commercial damage, including but not limited to special, incidental, consequential, or other damage.

Safety Instructions

Always read the safety instructions carefully

- Keep this User's Manual for future reference
- Keep this equipment away from humidity
- If any of the following situation arises, get the equipment checked by a service technician:
 - The equipment has been exposed to moisture.
 - The equipment has been dropped and damaged.
 - The equipment has obvious sign of breakage.
 - The equipment has not been working well or you cannot get it work according to User's Manual.

Table of Contents

1. Introduction	1
Features	1
Package Contents	1
System Requirements.....	1
2. Installation	2
On Windows® Vista / Windows® 7 / Windows® 8 / Windows® 8.1.....	2
On Windows® 2000 / Windows® XP	4
Verify the Driver Installation on Windows	5
On Mac OS® 10.4-10.5	6
On Mac OS® 10.6-10.8	8
Connecting Serial Device.....	11
3. Specifications	12
4. Regulatory Compliance	13
FCC Conditions	13
CE	13

1. Introduction

How to find a lightest way to contact your PDA to the USB port on your PC? USB Serial Converter operates as a bridge between one USB port and standard RS-232 Serial port. You just easily hook the cable into PC or Hub's port, and it can connect any RS-232 devices, such as PDA, scanner, printer...etc.

Features

- Compliant with the USB 1.1 version specification
- Supports RS-232 serial Interface
- Supports 500 kbps data transfer rate
- USB suspend condition
- Plug & Play compatible
- USB host device drivers available
- Draws its power from USB connection – no extra power adapter required
- Supports Windows® 2000, Windows® XP, Windows® Vista 32/64-bit, Windows® 7, Windows® 8, Windows® 8.1 and Mac OS® 10.x

Package Contents

Before installation, please check the items of the package.

- USB Serial Converter x1
- Driver CD x1
- Quick Installation Guide x1

System Requirements

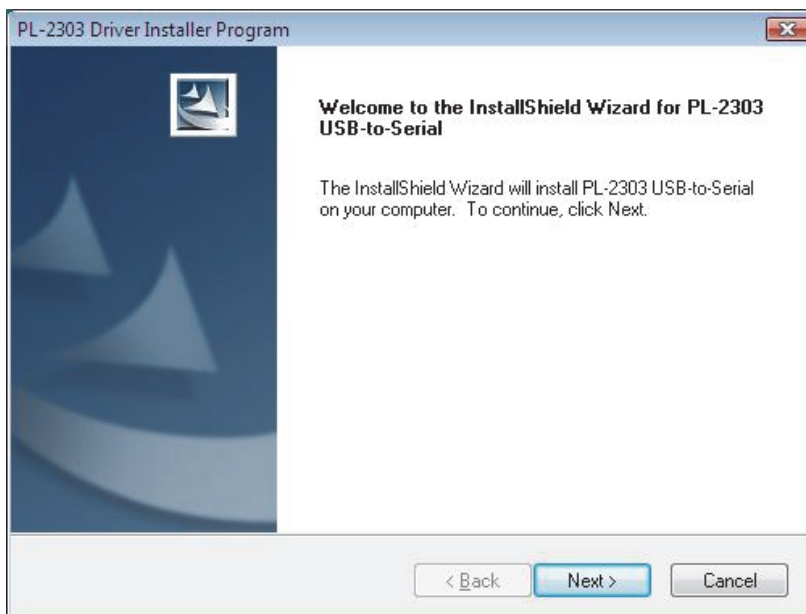
- IBM compatible computer or Mac
- Windows® 2000, Windows® XP, Windows® Vista 32/64-bit, Windows® 7, Windows® 8, Windows® 8.1 and Mac OS® 10.x
- Available USB port
- 64 MB RAM or more.
- Pentium® 233 MHz or higher

2. Installation

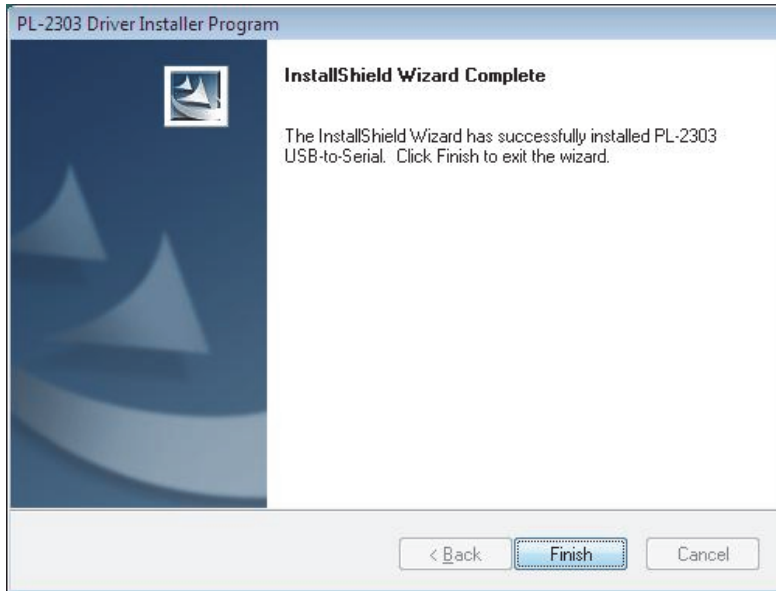
On Windows[®] Vista / Windows[®] 7 / Windows[®] 8 / Windows[®] 8.1

Note: DO NOT connect the USB Serial Converter to your computer before completing the driver installation.

1. Insert the provided CD into your CD-ROM drive. Run the **Setup** file under **E:\Driver** where E: is your CD-ROM drive letter. When the welcome screen appears, click **Next**.



2. Please click **Finish** to complete the installation.

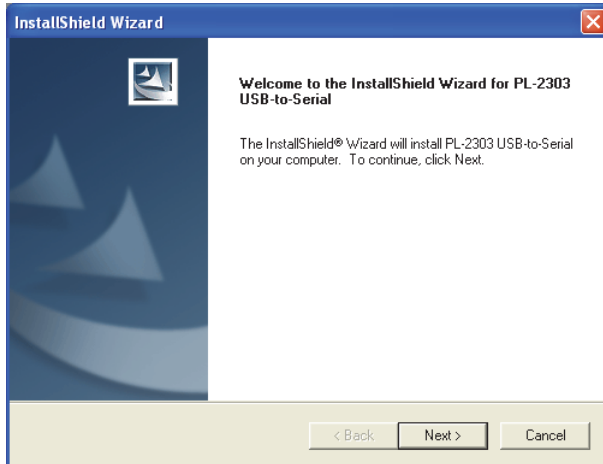


Once the installation is done, connect the converter to a free USB port on your computer.

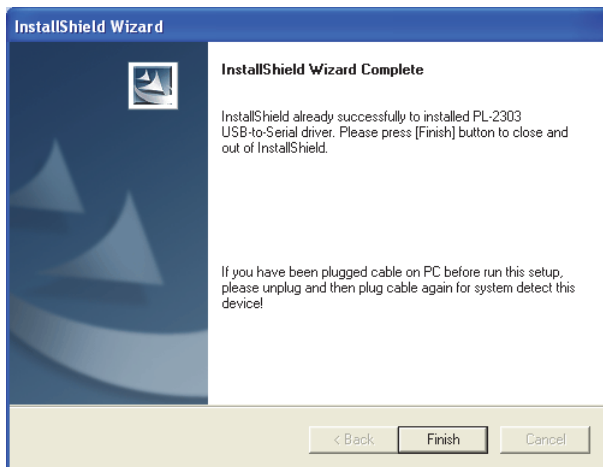
On Windows[®] 2000 / Windows[®] XP

Note: DO **NOT** connect the USB Serial Converter to your computer before completing the driver installation.

1. Insert the provided CD into your CD-ROM drive. When the welcome screen appears, click **Next**.



2. When the following screen appears, click **Finish**.



Once the installation is done, connect the converter to a free USB port on your computer.

Verify the Driver Installation on Windows

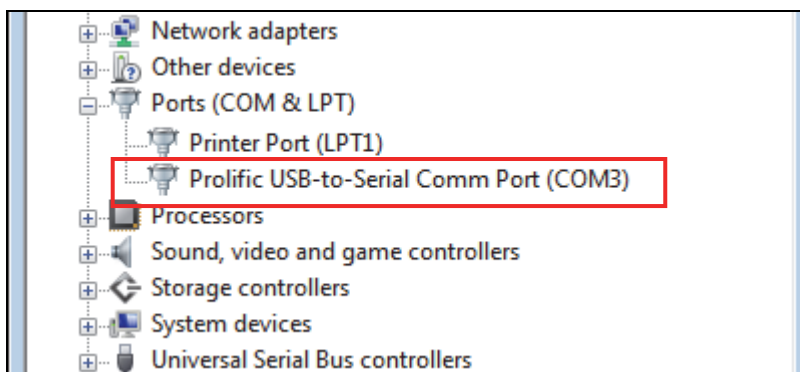
To verify your converter installation, please launch **Device Manager** by the steps below:

- On Windows® Vista/Windows® 7/ Windows® 8/ Windows® 8.1: Right-click the **Computer** icon on the desktop and select **Properties > Device Manager**.
- On Windows® 2000/Windows® XP: Right-click the Computer icon on the desktop and select **Properties > System > (Hardware) > Device Manager**.

In the **Ports (COM & LPT)** group, a string similar to **USB to Serial Port** or **Prolific USB to Serial Comm Port** should be displayed.

If there is a question or exclamation mark next to that item, then the driver is not properly installed. Please delete the item and repeat the installation steps.

Windows® 2000 / Windows® XP / Windows® Vista / Windows® 7 / Windows® 8 / Windows® 8.1



On Mac OS[®] 10.4-10.5

The provided Mac OS[®] X driver supports:

- Mac OS[®] 10.1 X and later for PowerPC based Mac
- Mac OS[®] 10.4-10.5 for Intel[®] based Mac

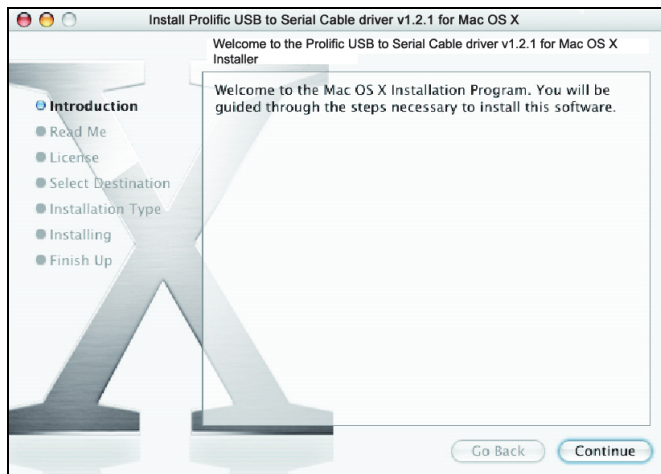
To install the drivers:

1. Insert the provided driver CD into your CD-ROM drive. Double-click the CD icon on the desktop and navigate to the directory of `\Driver\MacX`. Copy and then paste the **PL2303_1.2.1r2.dmg** file to the desktop.
2. Double-click the dmg file on the desktop to extract the file. Then double-click the **PL2303_1.2.1** file that is extracted.

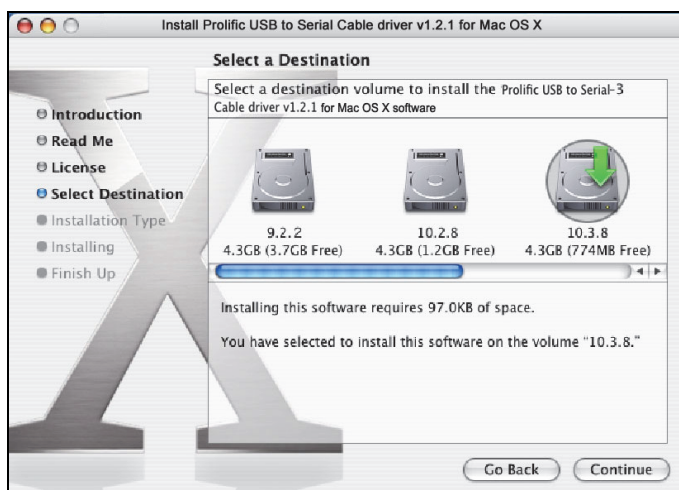


PL2303_1.2.1

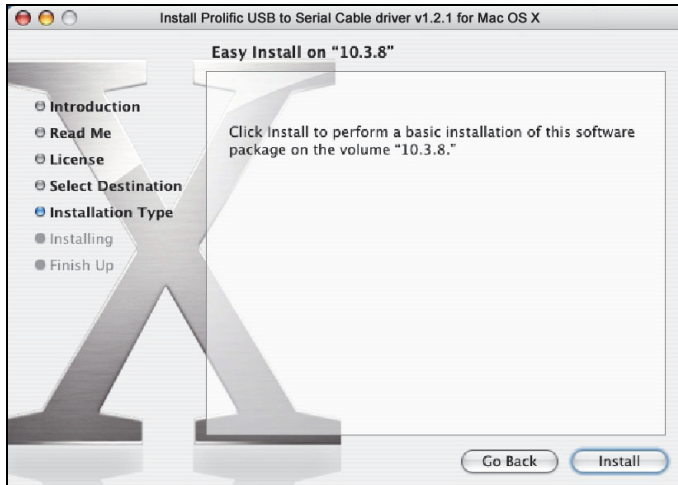
3. When the welcome screen appears, click **Continue**.



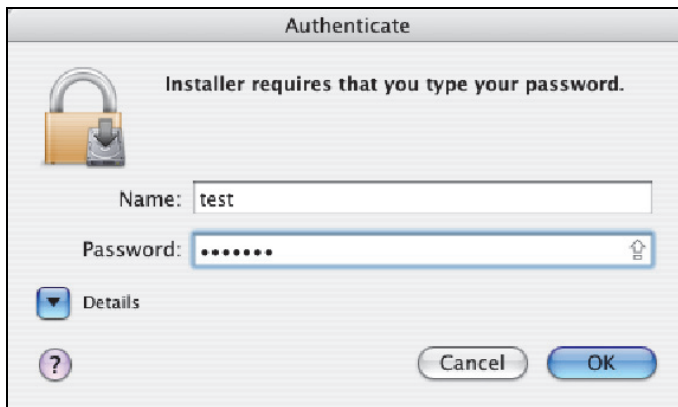
4. Select a destination disk to install the driver and click **Continue**.



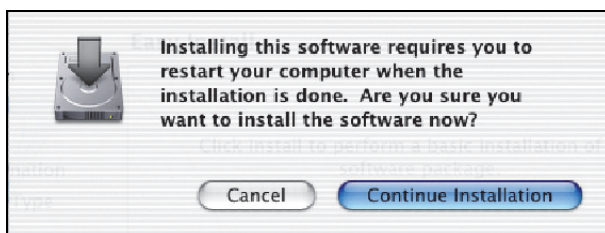
5. Click **Install**.



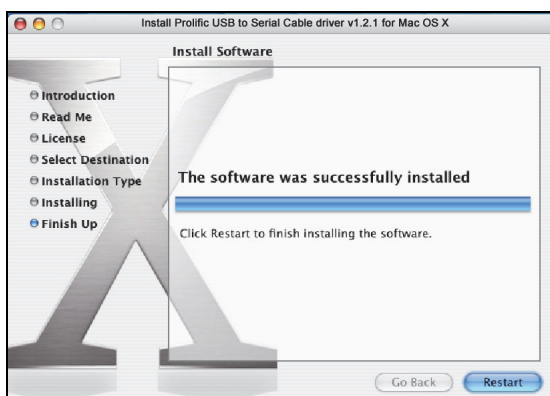
6. When the **Authenticate** screen appears, enter your password in the provided field and click **OK**.



7. Click **Continue Installation**.



8. Click **Restart** to finish installing the driver and reboot your Mac.



9. Connect the converter to a free USB port on your Mac.
10. To verify the installation: Go to **Apple System Profiler > Extensions** and you should find **ProlificUsbSerial** among the list. This means the installation is successfully done.

On Mac OS[®] 10.6-10.8

The provided Mac OS[®] X driver supports:

- Mac OS[®] 10.1 X and later for PowerPC based Mac
- Mac OS[®] 10.6-10.8 for Intel[®] based Mac

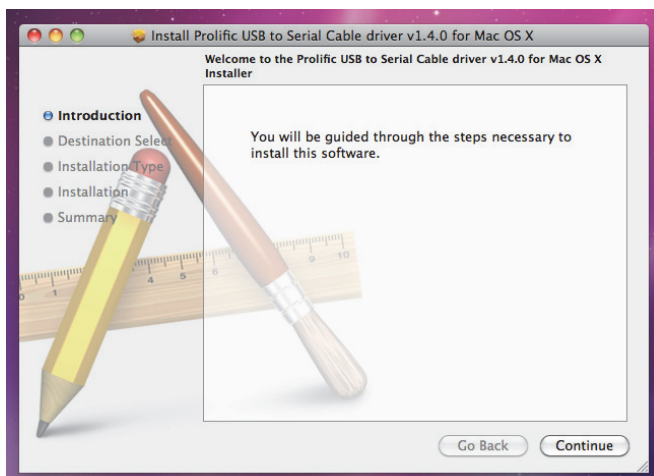
To install the drivers:

1. Insert the provided driver CD into your CD-ROM drive. Double-click the CD icon on the desktop and navigate to the directory of **\Driver\MacX**. Copy and then paste the **PL2303_1.4.0.dmg** file to the desktop.
2. Double-click the dmg file on the desktop to extract the file. Then double-click the **PL2303_1.4.0** file that is extracted.

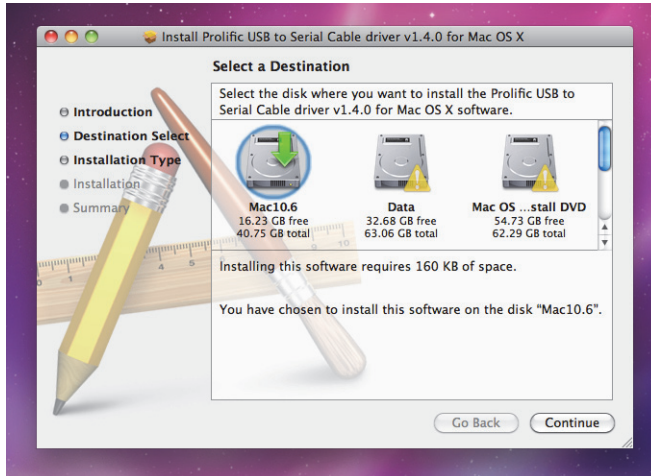


PL2303_1.4.0

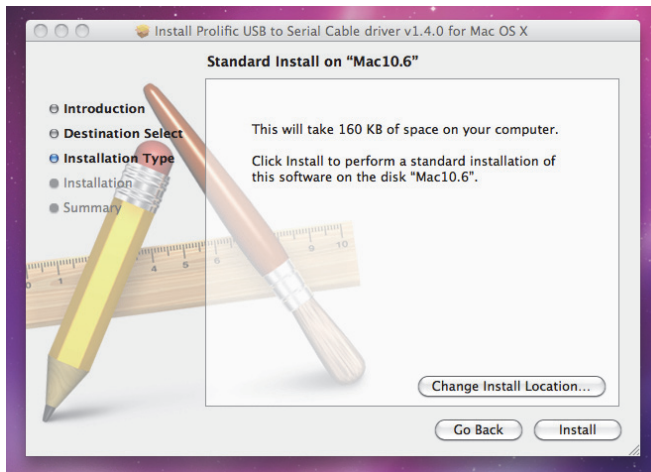
3. When the welcome screen appears, click **Continue**.



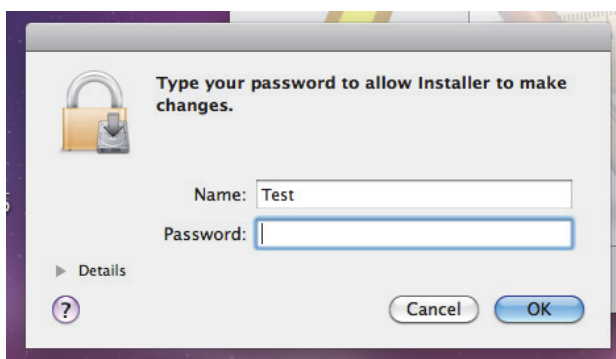
4. Select a destination disk to install the driver and click **Continue**.



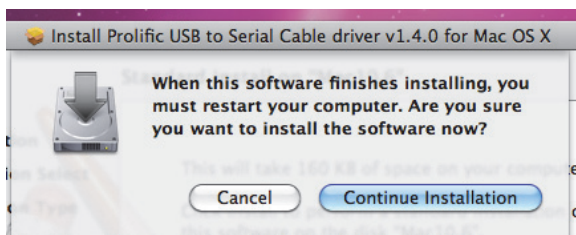
5. Click **Install**.

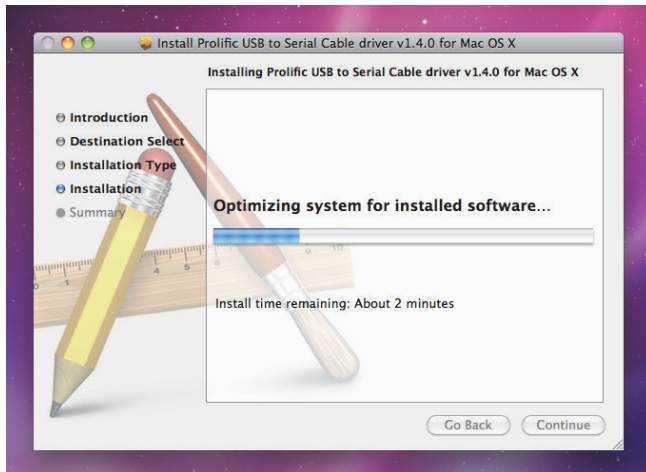


6. When the **Authenticate** screen appears, enter your password in the provided field and click **OK**.

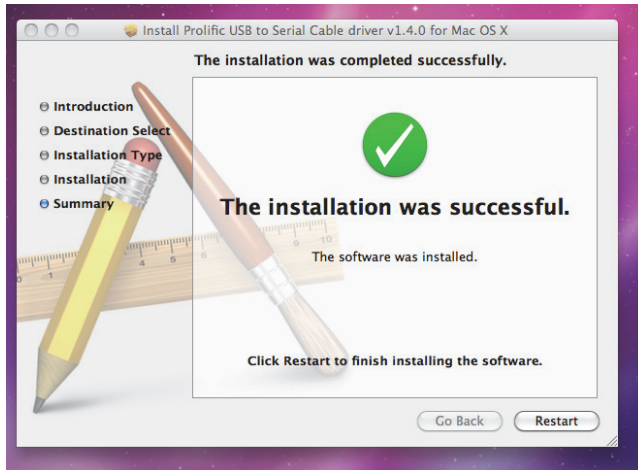


7. Click **Continue Installation**.





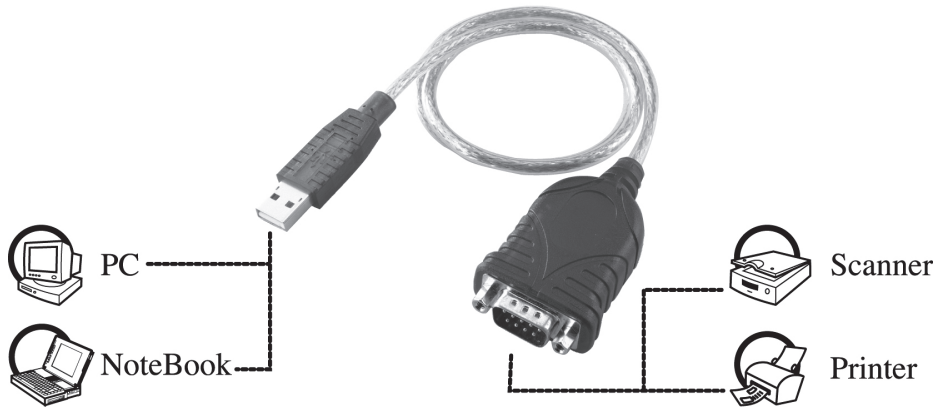
8. Click **Restart** to finish installing the driver and reboot your Mac.



9. Connect the converter to a free USB port on your Mac.
10. To verify the installation: Go to **Apple System Profiler > Extensions** and you should find **IOGraphicsFamily** and **IONDRVSupport** among the list. This means the installation is successfully done.

Connecting Serial Device

Now you can connect your RS-232 device to the converter. If prompted to install the driver for your serial device, follow the manual that comes with your serial device to complete the installation.



3. Specifications

Data Transfer Rate	500 kbps
Function	USB1.1 Serial Converter operates as a bridge between one USB port and standard RS-232 serial port
Ports	USB 1.1, USB Type A male
Power	Bus-powered
Operating System Support	<ul style="list-style-type: none"> - Windows[®] 2000, Windows[®] XP, Windows Vista[®] 32/64-bit, Windows[®] 7, Windows[®] 8, Windows[®] 8.1 - Mac[®] OS X
Accessories	Driver CD, Quick Installation Guide

** Specification is subject to change without prior notice.*

4. Regulatory Compliance

FCC Conditions

This equipment has been tested and found to comply with Part 15 of the FCC Rules. Operation is subject to the following two conditions:

- (1) This device may not cause harmful interference
- (2) This device must accept any interference received. Including interference that may cause undesired operation.

CE

This equipment is in compliance with the requirements of the following regulations:
EN 55 022: CLASS B

